

MAHAD NN

Rasse: German Genetic Allrounder

HB-Nr. 41236

Geb. 27.04.2015

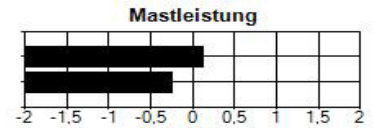
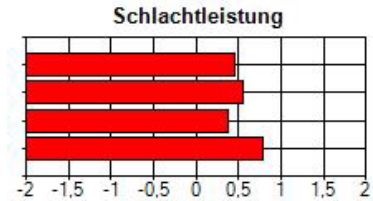
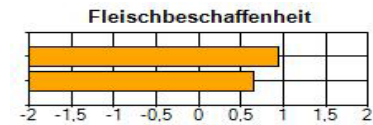
Station: Bethen



Produktlinie:

**Zuchtwertschätzung**

107 R: 0 %

 PTZ +5
 FVW -0,02

 La +0,07
 Schi +0,18
 Bauch% +0,47
 MFA +0,35

 PH1K +0,08
 TV +0,74


V. 26011	5	22	26011	VV. 10133	5	22	10133
				VM. 98252	5	2	98252
M. 99894	5	2	99894	MV. 26235	5	22	26235
				MM. Gosau	5	2	99960

	Anz. NK	Sicherheit	PW TZ	PW Fleischmass	PW Speckmass	PW Effizienz	GPW
Feld	111	0,93	162,07	0,82	2,95	-0,0073	101,90

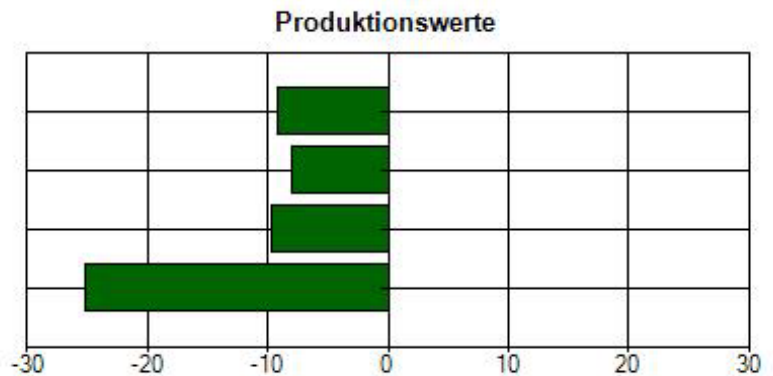
PW-Schätztermin: 18.02.2021

PW Schinken kg 90,85

PW Lachs kg 92,01

PW Bauch kg 90,28

PW Bauch % 74,73



Zuchtbetrieb: Hans-Detlef Petersen Volsemehusen