

MAHAN NN

Rasse: German Genetic Allrounder

HB-Nr. 41247

Geb. 08.05.2015

Station: Bethen



Produktlinie:

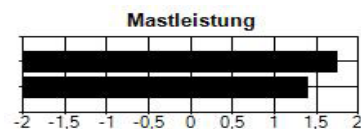


Qualifikation:

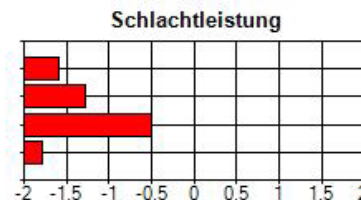
**Zuchtwertschätzung**

131 R: 59 % *

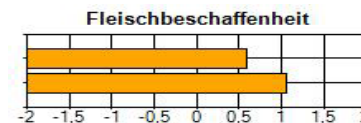
PTZ +68
 FVW +0,10



La -0,24
 Schi -0,42
 Bauch% -0,65
 MFA -0,78



PH1K +0,13
 TV +0,46



V. 25304	5	22	25304	VV. 18468	5	12	18468
				VM. 216565	5	12	216565
M. 99702	5	2	99702	MV. 10450	5	22	10450
				MM. 98977	5	2	98977

	Anz. NK	Sicherheit	PW TZ	PW Fleischmass	PW Speckmass	PW Effizienz	GPW
Feld	65	0,88	169,67	-6,20	0,42	-0,0108	105,38

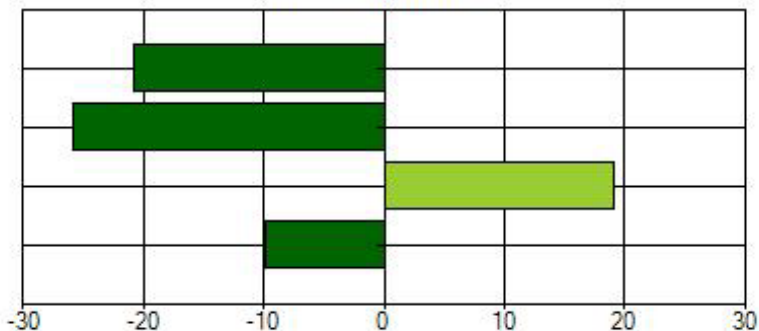
PW-Schätztermin: 18.02.2021

PW Schinken kg 79,24

PW Lachs kg 74,16

PW Bauch kg 119,12

PW Bauch % 90,07

Produktionswerte

Zuchtbetrieb: Timo Rohwer Schülp